

MEASURING DEVICES

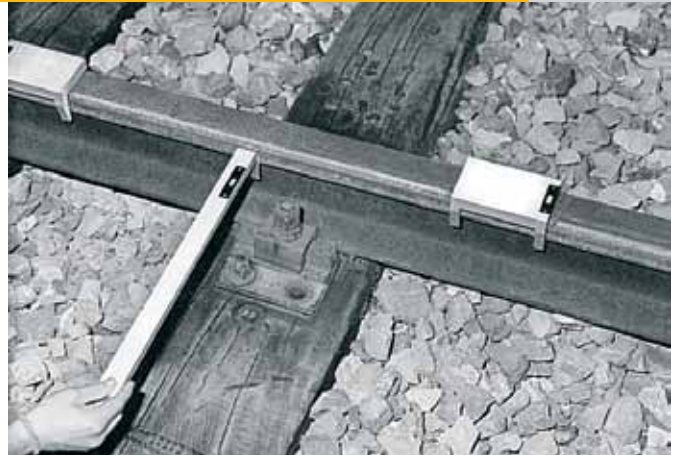
We calibrate your measuring devices! Contact your ROBEL partner.

ROMEAS Versine Versine Measuring Device

82.05

For measuring track curves

- Not obstructionless
- Two angle supports in aluminium with level
- 45 m chord
- Ruler
- Complete in canvas bag
- Weight ~2.6 kg



ROMEAS Versine Versine Measuring Device

82.06

For easy checking and determination of versines in track curves

- Can be used for all common rail profiles
- Measuring chord adjustable to rail height and from side to side
- Easy attachment to rail foot
- Obstructionless
- Consisting of 2 tensions clamps with rope drum and 70 m nylon rope
- Weight ~4.3 kg



ROMEAS Level Sighting and Levelling Unit

82.07

For determining the longitudinal level (with reference to the top of rail) and cross level tasks

- Scales every 10mm, alternating in 1- and 2-mm graduation
- Minus zone of level slide marked with a red bar
- Telescope magnification 24-fold
- Lens opening 36 mm
- Portrait image
- Shortest adjusting distance ~0.4 m
- Adjusting distance ~1.2 mm to 30 m
- Rotation range with micro adjustment 360°
- System height above top of rail 1300 mm
- Tilting device used as sighting facility
- Tilting range $\pm 40\text{‰}$
- Levelling rod used for levelling at fixed points
- Scale graduation 1 mm
- Measuring range of basic scale $\pm 800\text{ mm}$
- Measuring range of adjustable level slide
+ 150 mm
- 100 mm
- Total weight ~13 kg



ACCESSORIES

- 9800820010 Target rod lighting
consisting of: 1 cold cathode neon lamp, 12 V,
for side lighting of adjustable level slide,
including one rechargeable battery.
Battery, charger, shoulder bag
- 9800820001 Push-on part 0 - 150 (Standard = 0 - 50)
- 9800820008 Transport and storage box of water-resistant,
glued plywood with carrying handles

ROMEAS Track Square

82.11



For aligning sleepers

Double leg

- In robust aluminium design
- With inner and outer stops
- Insulated from rail to rail
- Weight ~3.5 kg

TECHNICAL SPECIFICATIONS

ROMEAS Square

	FIXED DESIGN	COLLAPSIBLE DESIGN
Dimensions (L x W)	1700 x 1400 mm	1700 x 700 mm
Weight	~3.6 kg	~3.2 kg